

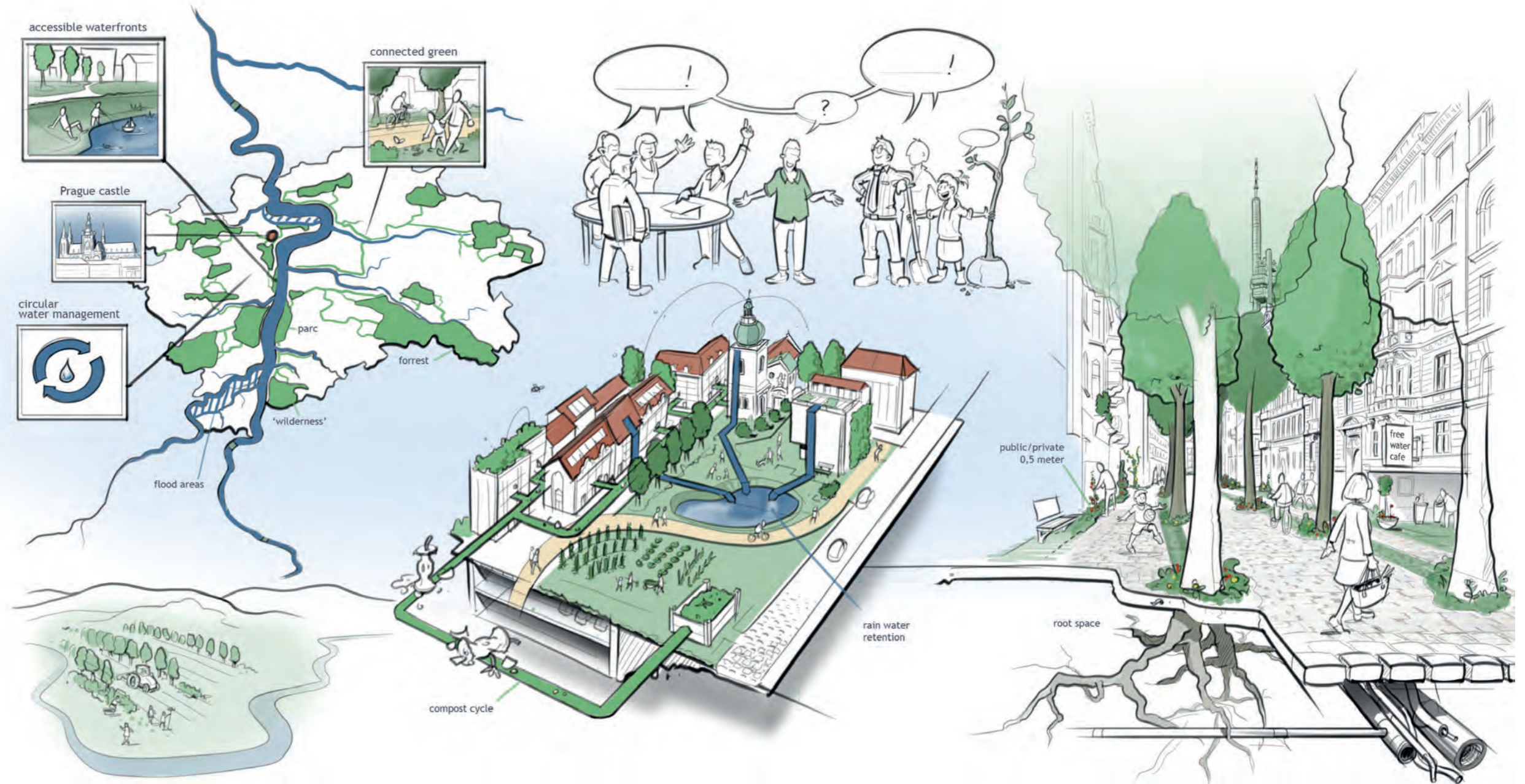


# Prague 2050: A liveable city in harmony with nature

## Desired future scenario

In 2050 Prague has a high-quality green infrastructure that is interconnected and provides multiple ecosystem services. Water is valued as an integral part of the city, used for both recreation and sustainable water management.

Prague is in symbiosis with nature, contributing to a high quality of living. Through a smart combination of technology and nature-based solutions, the city is flexible to adapt to the climate and changing circumstances. This is shown at all scales and levels in the city. In the visual this is indicated at 3 levels: the street, the neighbourhoods and the relationship with the surroundings. Smart planning & design are applied at all levels, to adapt to local circumstances and to allow flexibility over time and use.



Key elements of the desired future scenario:

### A city in symbiosis with its natural landscape

In 2050 Prague is in harmony with its surroundings. The meandering rivers, creeks and ponds are accessible and persuade people to enjoy their clean water. A local circular system retains rain- and waste water and makes it available for re-use. The water bodies provide protection against flooding and drought by retaining and providing space for rainwater. The available land is smartly managed, using it for agriculture, parks and 'wild nature'. There is a smart choice for different, small-scale crop production, to protect the soil and enhance biodiversity. The people of Prague enjoy the local food.

### Neighbourhoods enriching the lives of people

In 2050 neighbourhoods in Prague are enjoyable areas to live, work, eat, shop, relax and learn - with green and blue infrastructure in public spaces that suit the local needs and possibilities. The local people and residents are involved in the design and implementation of green and blue. People feel ownership of their surroundings and there is a balance between private, public and semi-public areas. Local parks are multifunctional: rainwater retention, micro-climate improvement and recycling organic waste, as well as education and recreation. The vegetation structure is a linked system of different parts: parks and smaller green structures that spread like a web across neighbourhoods. Buildings are energy efficient, with green walls and roofs.

### Comfortable streets

In 2050 the streets are of high quality and designed around people. Trees in the streets provide shade for people to enjoy being outside and reduce the heat island effect. Underground, space is created for the roots of trees and a smart water retention system for re-use of water on the spot. The streets are pleasant places to stay and meet, and indoor and outdoor spaces are connected at street level. Gardens, shops, bars, restaurants and other facilities on the ground floor are easily accessible and connected to outdoor terraces and gardens. This provides a good environment for walking and cycling. Flat and green roofs are also accessible for people.

### Co-created spatial planning and spaces

In 2050 urban planning in Prague is a transparent, coherent and effective process. 'Local stewards' have responsibility for overall aspects of places, parks and landscapes.

To be adaptive to the site, each project is different, and managed by local multidisciplinary teams that take broader agreed goals into account and work towards a shared vision. Supported by clear legislation, these local initiatives are open to enable local solutions.

In 2050 the people are involved and skilled to co-create, handle different views and integrate different perspectives. People feel responsible, and volunteer to participate in the creation, development and maintenance of their own living environment.